





High Voltage Supply
Model 1000

High Voltage Supply
Model 1000
Green label with a key symbol

1000
1000
1000
1000

High Voltage Supply
Model 1000

STOP POWER OFF ON STOP ON STOP ON STOP ON STOP ON

CHA Industries
MILITARY GRADE

Control panel for CHA Industries featuring a central knob, several indicator lights, and a small diagram.

A large, blank silver metal panel, likely a cover for internal components.

Panel with three analog meters and various switches.

Panel with a digital display and a single knob.

Panel with multiple knobs and switches.

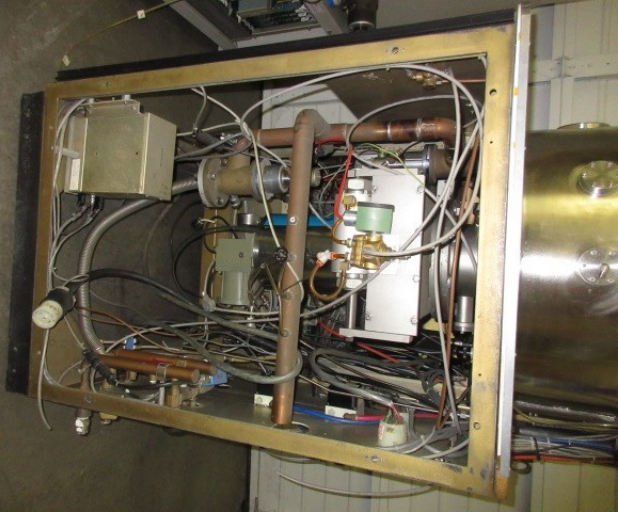
Large bottom panel with a central black switch and yellow text.



SPUTTER SYSTEM





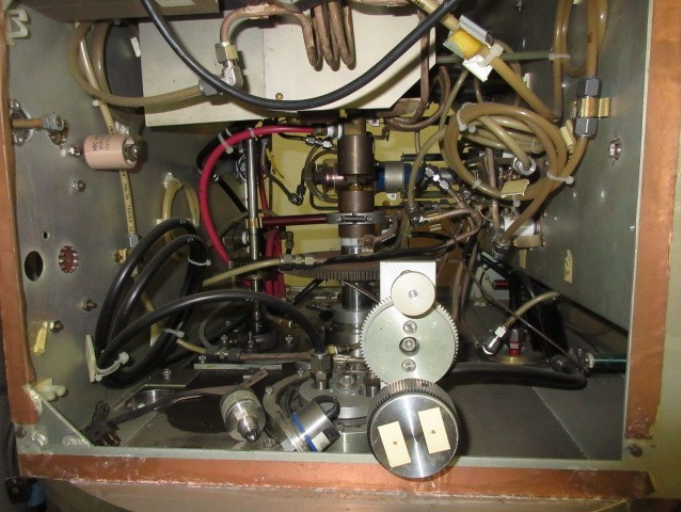


CTI
CRYO-TORF
HIGH VACUUM PUMP

FELIX
Low Noise

CRYO 2





MRC SPUTTERING SYSTEM

TYPE

5972

SERIAL NO.

10230

POWER

5 KW/KV

RF

DC

TARGET SIZE

4 1/2"

P/N

UTILITIES

240V

VOLTS.

60

AMP.

60

HZ.

3

PHASE

50/100

PSI AIR.

50/25

PSI WATER.

1.5

GPM

MATERIALS RESEARCH CORP.
ORANGEBURG, N.Y., U.S.A. 10962

MRC SPUTTERING SYSTEM

TYPE

3671

SERIAL NO.

16230

POWER

5

KW/KV

RF

DC

TARGET SIZE

3"

P/N

UTILITIES

VOLTS.

AMP.

HZ.

PHASE

PSI AIR.

PSI WATER.

GPM

MATERIALS RESEARCH CORP.
ORANGEBURG, N.Y., U.S.A. 10962