







CRYO-TORR [®] **8 CRYOPUMP**
P/N 3543811G004 S/N 32F9018509

US Patents 4,655,046 4,555,907
British Patent 0185702 0232325



CONFORMS TO UL STD 3101-1
CERT. TO CAN/CSA STD C22.2 NO. 1010-1



CTI-CRYOGENICS
HELIX TECHNOLOGY CORPORATION

MADE IN U.S.A.

▲ WARNING



FLAMMABLE, CORROSIVE, TOXIC AND
POTENTIALLY EXPLOSIVE CHEMICALS
MAY BE PRESENT IN THIS PUMP.

Misuse may result in severe or fatal
injury.

Do not modify or remove the pressure
relief valve.

Provide safe discharge of all vented
substances.

Do not install a hot-flamelet device on
this cryopump.

Frequent regeneration cycles are
required if oxygen/carbon is present.

Refer to product manual before
installing, operating or servicing.



CRYO-TORN  CRYOPUMP
P/N: 304348-1-010000 6.0W 1000170000

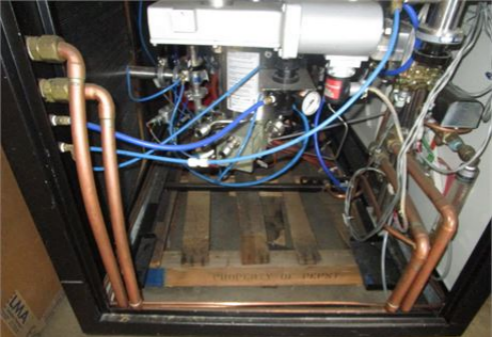
1000170000 1000170000 1000170000
1000170000 1000170000 1000170000



CRYOGENICS
HEAT TREATMENT CORPORATION

MADE IN U.S.A.





LWA

AIRCO Temescal

BERKELEY CALIFORNIA

FC-1800
SERIAL NO 20

PROJECT NO

08-0800

DRAWING
NO

08-0800

INSTRUCTION
MANUAL NO

0101-3051-0

CUSTOMER
ORDER NO

08-0800

CAUTION —

READ INSTRUCTION
BEFORE OPERATING
EQUIPMENT

MADE IN U.S.A.

ARCO Temescal

BERKELEY CALIFORNIA

FC-1800

SERIAL N° 210

PROJECT N° 08-0800

DRAWING N° 0316-4584-0

INSTRUCTION MANUAL N° 0101-3051-0

CUSTOMER ORDER N° HN542152Z

CAUTION — READ INSTRUCTION MANUAL BEFORE OPERATING EQUIPMENT

MADE IN USA



AIRCO Temescal

2850 SEVENTH STREET
BERKELEY, CALIFORNIA U.S.A.

MOD HV	Cntrl 14	SER	175
SCHEM		ASSY	411-8290
VOLTS		AMPS	
PHASE		FREQ	

MADE IN U.S.A.

AIRCO Tempco

2850 SEVENTH STREET
BERKELEY, CALIFORNIA U.S.A.

MOD HV Cnt 1 14	SER 175
	ASSY 411-S290
SCHEM	AMPS
VOLTS	FREQ
PHASE	

MADE IN U.S.A.

INFICON

LEYBOLD-HERAEUS

6500 FLY ROAD, EAST SYRACUSE N.Y. 13057

Model No.

6000

Serial No.

22-0002

AIRCO Tevescol

2850 SEVENTH STREET
BERKELEY, CALIFORNIA U.S.A.

MOD 08-0859-103 SER 185

SCHEM 507-3285 ASSY

VOLTS

AMPS

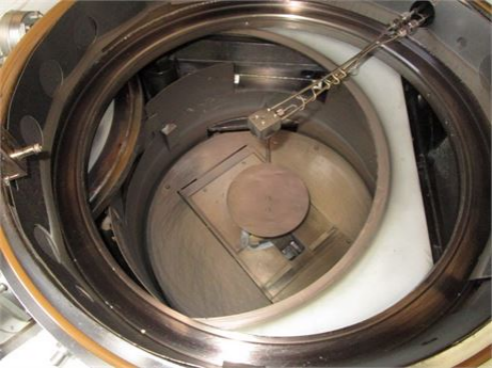
PHASE

FREQ

MADE IN U.S.A.

2100









The image shows a complex piece of equipment, possibly a cryogenic system or a specialized laboratory instrument. It features a large, polished stainless steel cylindrical component at the top. Below this, a black metal frame supports various parts, including a blue flexible hose that loops across the top. A prominent red oval warning label with the word "DANGER" in white capital letters is affixed to the black frame. The interior is filled with a dense network of wires, including blue, red, and grey cables, and various mechanical components like valves and connectors. A thick black flexible hose is visible on the right side. The entire unit is housed within a white cabinet, with the door open to reveal the internal components.

DANGER



CONTROL

RESERVE

TEST

CTI-CRYOGENICS

CTI-CRYOGENICS

HIGH VOLTAGE CONTROL

POWER ON

THROU
WATER

DOORS

AIR

PLUG CABLES
& KEYS

DOOR
OPEN
ONLY



H.V. ON

H.V. OFF

CURRENT LIMIT



VOLTAGE ADJUST



OFF

KEYLOCK

ON



ELECTRON GUN CONTROL

VAC
TANK

VAC
GAUGE

GUN
WATER

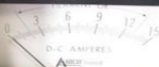
AUXILIARY

FOCUS

1 GUN
TANK

2 GUN
TANK

FOR
REFERENCE
ONLY



EMISSION CURRENT



EMISSION CURR

FILAMENT CURRENT

EX-1
FIL-ON

GUN #2
FIL-OFF



SWEEP CONT



FRONT PANEL

CRYO-TORR™ Regeneration Control

DELAY



HOURS



PURGE



DELAY



ROUGH

CRYOPUMP ON



POWER TO
CRYOPUMP

DELAY

NORMAL

TEMPERATURE INDICATOR



ON



LOW
SET
POINT



ACTI-CRYOGENICS

ACTI-CRYOGENICS

HIGH VOLTAGE CONTROL

POWER ON

TEMPERATURE

WARNING

D-C ELECTRONICS

APR 1988

ILK GP

AUTO SEQUENCE



AUTO PUMPING



INFICON

IC 6000



AUTO SEQUENCE

AUTO





GAUGE CONTROLLER
SERIES 280
GRANVILLE-PHILLIPS

ON / OFF

ADJUST

1

2

AUTO ON



EMIS





CANARY TECHNOLOGIES

EB-6