





2 METER

VACUUM/CONTAMINATION DETECTOR

MODEL 2000-100-000-000-000

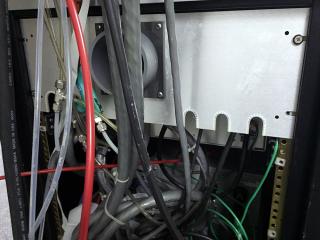
MFG: MATRIX

MODEL: SYSTEM ONE ETCHER STYLE 300

SERIAL NO: 8133

P/N: 101-0133

HEAT POWER (WATTS): 150-140000; 1/2" 6002



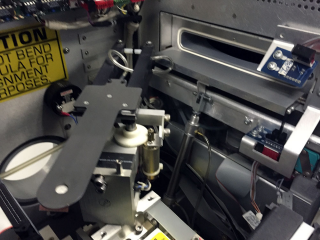


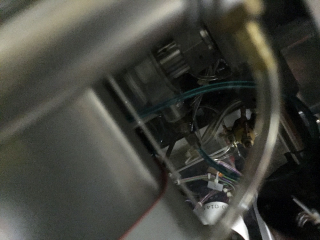
**.2 METER**  
**MONOCHROMATOR/DETECTOR**

VACUUM AND INSTRUMENTS, INC., Dallas, TX.




**CAUTION**  
DO NOT BEND  
TUBULA FOR  
ALIGNMENT  
EXPOSES



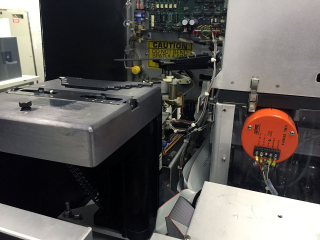






A photograph showing a large, rectangular, silver-colored metal plate, likely a wafer carrier or stage, mounted on a complex piece of equipment. The plate has three small circular holes. A white rectangular sign with a black border is attached to the right side of the plate. The sign contains the text: "PLEASE FLAT FIND WAFERS OR WAFER MISHANDLING MAY OCCUR." In the background, an orange cylindrical component with a multi-pin connector and various wires is visible. The overall scene is dimly lit, focusing on the metal plate and the warning sign.

PLEASE FLAT FIND WAFERS  
OR WAFER MISHANDLING  
MAY OCCUR.







4131 Lakeside Drive  
Richmond, CA 94806 - (415) 222-2727

MODEL: SYSTEM ONE ETCHER - STYLE 302

SERIAL NO.: 6133 P/N 101-0175

INPUT POWER:

200-240 VOLTS, 1 PHASE, 50/60 HZ

\_\_\_\_\_ VOLT-AMPS

U.S. PATENT NO. 4,736,087

Made in USA